



# MODERN BALINESE PRIVATE POOL VILLAS



**PHUVISTA 3**  
NAIYANG



DOT PROPERTY  
THAILAND  
AWARDS  
2024

**WINNER**

BEST MID-RANGE POOL VILLA  
PHUKET

Phuvista 3 Naiyang  
by Airport Pool Villa Co.,Ltd.

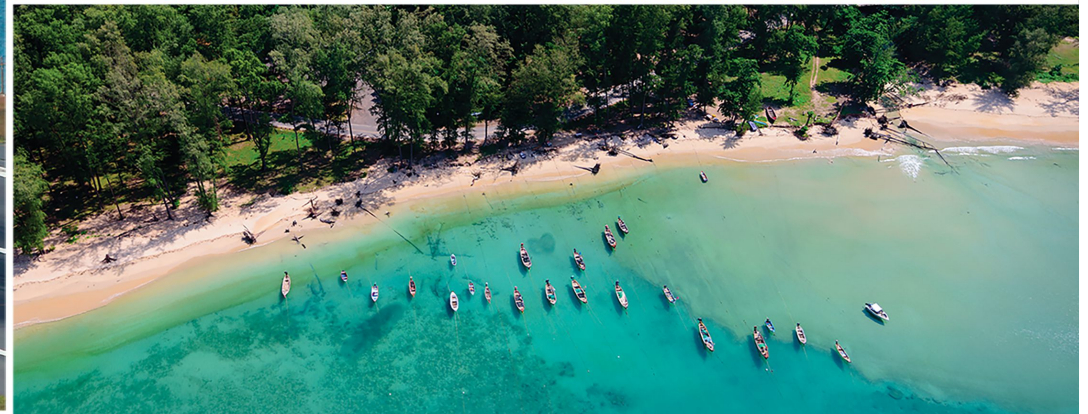
Organised by  
**dotproperty**  
GROUP

 **NAIYANG BEACH**

# Phuket International Airport

The second busiest airport in Thailand. Millions of passengers each year visit Phuket to enjoy a wide range of tourist services, natural beauty of the world famous Phuket beaches and fascinating tourist attractions. Today, many domestic and international airlines are on service and more than 16 million passengers per year fly via Phuket airport.

 3.8 KM.  9 MINS



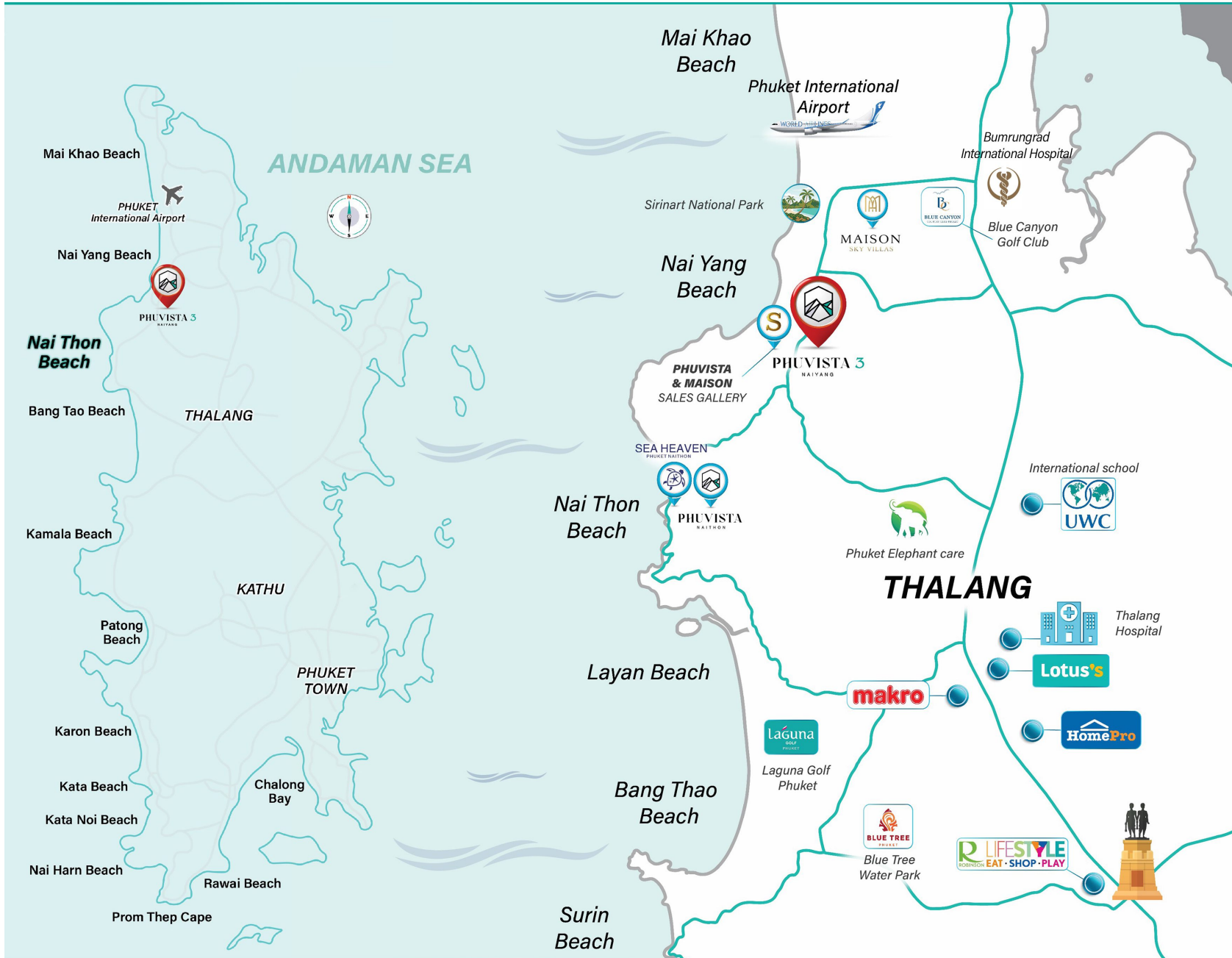
## Nai Yang Beach

One of those out-of-the-beaten-tracks hidden gems, little known to first-timers but very popular with returning travellers. Beautiful, shaded, and full of tiny fun bars and restaurants, Nai Yang remains peaceful like most of the northern beaches of Phuket.

Naiyang Beach is just next to the Sirinat National Park. The park is best known for its white sandy beaches and the view of aircraft flying low over a beach for landing. It is very commercialized with many resorts in and around the park, frequently visited by a large number of tourists.

 2.2 KM.  6 MINS

# PRIME LOCATION NEARBY



Phuket International Airport 9 MINS	Sirinat National Park 6 MINS
Banana Beach 12 MINS	Mai Khao Beach 18 MINS
UWC International School 14 MINS	Blue Canyon Golf Club 14 MINS
Laguna Golf Club 25 MINS	Nai Yang Beach 6 MINS
Phuket Yacht Haven Marina 19 MINS	Nai Thon Beach 8 MINS
Tesco Lotus 18 MINS	Phuket Elephant care 9 MINS
Splash Jungle Water Park 17 MINS	Pullman Phuket Arcadia Nai Thon 8 MINS
Bumrungrad International Hospital 14 MINS	Thalung Hospital 17 MINS
Robinson Life Style 30 MINS	Phuket Town 50 MINS

## LOCATION MATTER

# PROJECT INFORMATION



## TYPE OF VILLA

- **Type SONYA** at 29 units  
Single Storey, 2-3 Bedroom / 3 Bathroom  
Land Area 240-320 Sq.m / . Build Up Area 208.62-276.70 Sq.m.
- **Type MONTA** at 13 units  
Single Storey, 3 Bedroom / 4 Bathroom  
Land Area 336-651 Sq.m. / Build Up Area 276.67-282.28 Sq.m.
- **Type LENSA** at 2 units  
Single Storey, 4 Bedroom / 4 Bathroom  
Land Area 464. – 614 Sq.m. / Build Up Area 354-375 Sq.m.

## FACILITIES & SERVICES

- 24-hour Security Guard
- Club House
- CCTV
- Underground Cable System.
- Garbage Collection
- Juristic Person Office

**PROJECT NAME**

PHUVISTA 3 NAIYANG

**DEVELOPER**

Airport Pool Villa Co.,Ltd.

**LOCATION**

99/9 Moo.3 Sakoo

Sub-district,

Thalang district,

Phuket Province,

Thailand

**PROJECT TYPE**

Private Pool Villa

**LAND AREA**

15-2-18.9 Rai

**TOTAL VILLAS**

44 villas

# EXTERIOR



# MASTER PLAN



	COLOR	CLUB HOUSE	INTERNAL AREA + EXTERNAL AREA	TOTAL (PLOTS)
		CLUB HOUSE	1,035.41 SQ.M.	1
VILLA NAME	COLOR	VILLA TYPE	INTERNAL AREA + EXTERNAL AREA	TOTAL (PLOTS)
SONYA		A	208.62 SQ.M.	7
		A PLUS	276.70. SQ.M.	22
MONTA		B1	276.67. SQ.M.	7
		B2	276.68 SQ.M.	5
		B3	282.28 SQ.M.	1
LENSA		C1	375.87 SQ.M.	1
		C2	354.35 SQ.M.	1
<b>GRAND TOTAL</b>				<b>44</b>

# FLOOR PLAN TYPE SONYA / A



## GROUND FLOOR PLAN

### FUNCTIONAL AREA

1	2 CAR PARKING	18.36	SQ.M.
2	PUMP ROOM	5.67	SQ.M.
3	POWDER ROOM	6.40	SQ.M.
4	GATE ENT.	8.38	SQ.M.
5	STORAGE	2.80	SQ.M.
6	LIVING, DINING & KIT. ISLAND	47.33	SQ.M.
7	MASTER BEDROOM	21.85	SQ.M.
8	MASTER W.I.C	4.75	SQ.M.
9	MASTER BATHROOM	11.60	SQ.M.
10	BEDROOM 2	16.76	SQ.M.,
11	BATH ROOM 2	6.72	SQ.M.
12	CORRIDOR	3.24	SQ.M.
13	WASTE BOX	1.20	SQ.M.
14	POOL DECK	22.23	SQ.M.
15	POOL 3x7 M.	29.25	SQ.M.,
16	SHOWER	2.08	SQ.M.

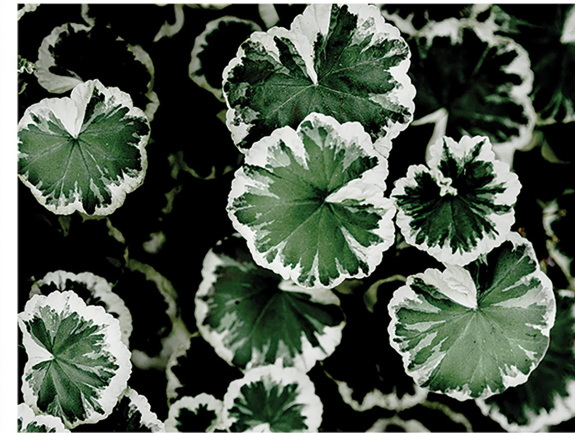
**GRAND TOTAL AREA 208.62 SQ.M.**

**2 BEDROOM / 3 BATHROOM**

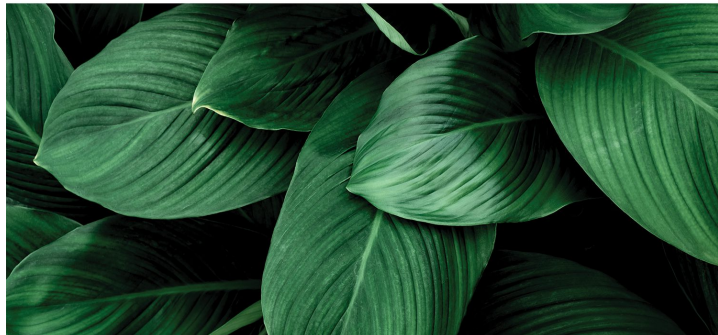
# VILLA TYPE SONYA / A



Content and images are for advertising purpose only.



## Phuvista 3 Naiyang



is situated in hilly areas surrounded by lush greenery. Popular destinations for such experiences might include places with elevated landscapes. Ensure that the villa offers the amenities you desire for relaxation. This might include a private pool, a spacious garden, and comfortable outdoor seating areas.

# TYPE SONYA / A

2 3 1 2



**INTERIOR** DESIGN

TYPE  
**SONYA / A**

2 🛏 3 🚢 1 🏠 2 🚗



**INTERIOR**  
DESIGN

TYPE  
**SONYA / A**

2  3  1  2 



**INTERIOR**  
DESIGN

# FLOOR PLAN TYPE SONYA / A PLUS



## GROUND FLOOR PLAN

### INTERNAL AREA

1	2 CAR PARKING	35.40	SQ.M.
2	PUMP ROOM	4.16	SQ.M.
3	POWDER ROOM	5.13	SQ.M.
4	GATE ENT.	8.00	SQ.M.
5	STORAGE	2.88	SQ.M.
6	LIVING, DINING & KIT. ISLAND	48.39	SQ.M.
7	MASTER BEDROOM	17.28	SQ.M.
8	MASTER W.I.C	9.32	SQ.M.
9	MASTER BATHROOM	12.16	SQ.M.
10	BEDROOM 2	14.62	SQ.M.,
11	W.I.C 2	9.18	SQ.M.
12	BATH ROOM 2	7.04	SQ.M.
13	BEDROOM 3	21.06	SQ.M.
14	BATHROOM 3	5.92	SQ.M.
15	CORRIDOR	4.20	SQ.M.
16	WASTE BOX	1.50	SQ.M.
17	WASHING AREA	15.35	SQ.M.
18	POOL DECK	24.97	SQ.M.
19	POOL 3X7 M.	28.89	SQ.M.
20	SHOWER	1.25	SQ.M.

**GRAND TOTAL AREA**

**276.70 SQ.M.**

**3 BEDROOM / 4 BATHROOM**

# VILLA TYPE SONYA / A PLUS



# TYPE SONYA / A PLUS

3  4  1  2 



**INTERIOR** DESIGN

TYPE

# SONYA / A PLUS

3  4  1  2 





TYPE  
**SONYA / A PLUS**

3  4  1  2 



**INTERIOR**  
DESIGN



# FLOOR PLAN TYPE MONTA / B1



## GROUND FLOOR PLAN

### INTERNAL AREA

1	2 CAR PARKING	32.48	SQ.M.
2	PUMP ROOM	4.34	SQ.M.
3	POWDER ROOM	3.58	SQ.M.
4	GATE ENT.	8.52	SQ.M.
5	STORAGE	2.40	SQ.M.
6	LIVING, DINING & KIT. ISLAND	45.84	SQ.M.
7	MASTER BEDROOM	20.8	SQ.M.
8	MASTER W.I.C	5.78	SQ.M.
9	MASTER BATHROOM	12.45	SQ.M.
10	BEDROOM 2	14.58	SQ.M.,
11	W.I.C 2	3.01	SQ.M.
12	BATH ROOM 2	5.48	SQ.M.
13	BEDROOM 3	17.81	SQ.M.
14	BATHROOM 3	7.22	SQ.M.
15	CORRIDOR	5.46	SQ.M.
16	WASTE BOX	1.20	SQ.M.
17	TERRACE	9.80	SQ.M.
18	POOL DECK	31.54	SQ.M.
19	POOL 3X7 M.	33.49	SQ.M.
20	SHOWER	1.89	SQ.M.

**GRAND TOTAL AREA**

**267.67 SQ.M.**

**3 BEDROOM / 4 BATHROOM**

# FLOOR PLAN TYPE MONTA / B2



## GROUND FLOOR PLAN

### INTERNAL AREA

1	2 CAR PARKING	33.04	SQ.M.
2	PUMP ROOM	5.10	SQ.M.
3	POWDER ROOM	4.18	SQ.M.
4	GATE ENT.	9.86	SQ.M.
5	STORAGE	2.28	SQ.M.
6	LIVING, DINING & KIT. ISLAND	46.44	SQ.M.
7	MASTER BEDROOM	21.40	SQ.M.
8	MASTER W.I.C	6.38	SQ.M.
9	MASTER BATHROOM	13.05	SQ.M.
10	BEDROOM 2	15.18	SQ.M.,
11	W.I.C 2	3.61	SQ.M.
12	BATH ROOM 2	6.08	SQ.M.
13	BEDROOM 3	18.41	SQ.M.
14	BATHROOM 3	6.97	SQ.M.
15	CORRIDOR	5.46	SQ.M.
16	WASTE BOX	1.32	SQ.M.
17	TERRACE	9.80	SQ.M.
18	POOL DECK	32.74	SQ.M.
19	POOL 3X7 M.	33.49	SQ.M.
20	SHOWER	1.89	SQ.M.

**GRAND TOTAL AREA**

**276.68 SQ.M.**

**3 BEDROOM / 4 BATHROOM**

# FLOOR PLAN TYPE MONTA / B3



## GROUND FLOOR PLAN

### INTERNAL AREA

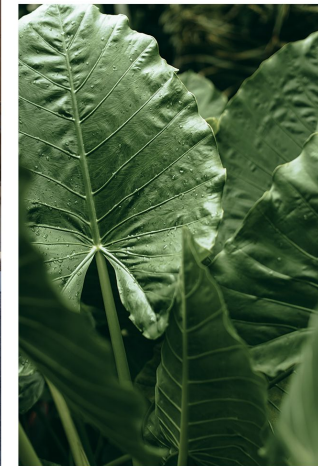
1	2 CAR PARKING	34.90	SQ.M.
2	PUMP ROOM	4.42	SQ.M.
3	POWDER ROOM	4.37	SQ.M.
4	GATE ENT.	11.50	SQ.M.
5	STORAGE	2.28	SQ.M.
6	LIVING, DINING & KIT. ISLAND	46.48	SQ.M.
7	MASTER BEDROOM	21.40	SQ.M.
8	MASTER W.I.C	6.38	SQ.M.
9	MASTER BATHROOM	13.05	SQ.M.
10	BEDROOM 2	15.18	SQ.M.,
11	W.I.C 2	3.61	SQ.M.
12	BATH ROOM 2	6.08	SQ.M.
13	BEDROOM 3	20.95	SQ.M.
14	BATHROOM 3	6.97	SQ.M.
15	CORRIDOR	5.46	SQ.M.
16	WASTE BOX	1.32	SQ.M.
17	TERRACE	9.80	SQ.M.
18	POOL DECK	32.75	SQ.M.
19	POOL 3X7 M.	33.49	SQ.M.
20	SHOWER	1.89	SQ.M.

**GRAND TOTAL AREA**

**282.28 SQ.M.**

**3 BEDROOM / 4 BATHROOM**

# VILLA TYPE MONTA / B1



## A Modern Balinese

inspired tropical pool villa combines contemporary design elements with the lush and tropical ambiance that is characteristic of Bali. Here are some key features and design elements you might find in Phuvista 3 Naiyang. Emphasis on open spaces, with large windows and sliding doors to create a seamless transition between indoor and outdoor areas. Gardens surround the villa with native plants and vibrant flowers.



# TYPE MONTA / B1

3  4  1  2 



**INTERIOR**  
DESIGN

TYPE  
**MONTA / B1**

3  4  1  2 



**INTERIOR**  
DESIGN





TYPE  
**MONTA / B1**

3  4  1  2 



**INTERIOR**  
DESIGN



# FLOOR PLAN TYPE LENZA / C1

4 BEDROOM / 4 BATHROOM



## GROUND FLOOR PLAN

### INTERNAL AREA

1	3 CAR PARKING	56.93	SQ.M.
2	PUMP ROOM	5.00	SQ.M.
3	POWDER ROOM	5.44	SQ.M.
4	GATE ENT.	1.80	SQ.M.
5	COVER WALK WAY	27.58	SQ.M.
6	STORAGE	28.62	SQ.M.
7	FOYER	11.02	SQ.M.
8	LIVING, DINING & KIT. ISLAND	46.48	SQ.M.
9	BEDROOM 4	13.60	SQ.M.
10	MASTER BEDROOM	21.40	SQ.M.
11	MASTER W.I.C	6.38	SQ.M.
12	MASTER BATHROOM	13.05	SQ.M.
13	BEDROOM 2	15.18	SQ.M.,
14	BATHROOM 2	9.20	SQ.M.
15	BEDROOM 3	18.40	SQ.M.
16	W.I.C 3	6.72	SQ.M.
17	BATHROOM 3	7.14	SQ.M.
18	CORRIDOR	12.76	SQ.M.
19	WASTE BOX	1.08	SQ.M.
20	POOL DECK	37.52	SQ.M.
21	POOL 3x7	45.00	SQ.M.
22	SHOWER	1.20	SQ.M.
23	PAVILION	6.25	SQ.M.
24	LAUNDRY	4.80	SQ.M.

**GRAND TOTAL AREA 375.87 SQ.M.**

# FLOOR PLAN TYPE LENSA / C2



## GROUND FLOOR PLAN

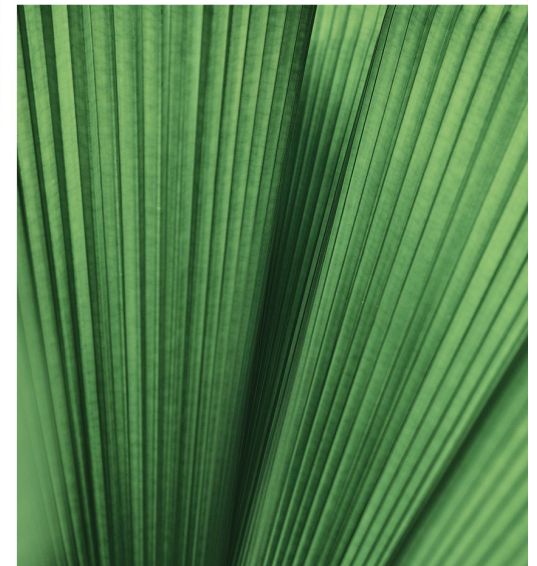
### INTERNAL AREA

1	3 CAR PARKING	52.64	SQ.M.
2	PUMP ROOM	5.00	SQ.M.
3	POWDER ROOM	5.44	SQ.M.
4	GATE ENT.	7.97	SQ.M.
5	STORAGE	7.08	SQ.M.
6	FOYER	11.02	SQ.M.
7	LIVING, DINING & KIT. ISLAND	34.50	SQ.M.
8	BEDROOM 4	13.60	SQ.M.
9	MASTER BEDROOM	20.58	SQ.M.
10	MASTER W.I.C	9.66	SQ.M.
11	MASTER BATHROOM	18.21	SQ.M.
12	BEDROOM 2	14.40	SQ.M.
13	BATHROOM 2	9.20	SQ.M.
14	BEDROOM 3	18.40	SQ.M.
15	W.I.C 3	6.72	SQ.M.
16	BATHROOM 3	7.14	SQ.M.
17	CORRIDOR	13.80	SQ.M.
18	WASTE BOX	1.02	SQ.M.
19	WALK WAY	1.20	SQ.M.
20	POOL DECK	39.52	SQ.M.
21	POOL 3x7	45.00	SQ.M.
22	SHOWER	1.20	SQ.M.
23	PAVILION	6.25	SQ.M.
24	LAUNDRY	4.80	SQ.M.

**GRAND TOTAL AREA 354.35 SQ.M.**

**4 BEDROOM / 4 BATHROOM**

# VILLA TYPE LENSA / C1



## A Private Pool

is a luxurious accommodation option that provides exclusivity, privacy, and a heightened level of comfort in outdoor areas with private gardens, sun decks, and a shaded lounge for relaxation.

# TYPE LENSA / C1

4 🚗 4 🏠 1 🌊 3 🏡



**INTERIOR**  
DESIGN

TYPE  
**LENSA / C1**

4 🛏 4 🚿 1 🏠 3 🚿



**INTERIOR**  
DESIGN



TYPE  
**LENSA / C1**

4  4  1  3 



**INTERIOR**  
DESIGN

# ELEGANCE CLUBHOUSE



# ELEGANCE CLUBHOUSE



Content and images are for advertising purpose only.



Content and images are for advertising purpose only.



Content and images are for advertising purpose only.

# DEVELOPER AWARDS



**DOT PROPERTY  
THAILAND  
AWARDS  
2024**

**WINNER**

**BEST MID-RANGE POOL VILLA  
PHUKET**

**Phuvista 3 Naiyang**  
by Airport Pool Villa Co.,Ltd.



The second generation of Manotamraksa family which is well-known among Thai people as a family who found JSP Property Public Company Limited, one of the biggest real estate business in Thailand

## SUCCESS STORY

**WEERAWIT MANOTAMRAKSA**

**CO-FOUNDER  
DEPUTY CHAIRMAN**

From 1990 which developed over 50 projects all over Thailand. The company expertise in commercial real estate development focusing in horizontal and housing new phenomena, up-country investment and big scale mix-used complex.

In 2021, the JSP Property PCL has cooperated with SENA Development PCL, and changed the company name into SENA Property PCL in 2022.

The second generation of family has refreshed the business concept by building the new empire which is focusing on housing developments in Bangkok and registered Bestart Heaven Co.,Ltd which is focusing on investment property in tourist attraction city, especially southern of Thailand



PHANG NGA



**DOT PROPERTY THAILAND AWARDS 2023**

**WINNER**

BEST LIFESTYLE RECREATION DEVELOPMENT PHUKET

Sea Heaven Phuket Nai Thon by Bestart Heaven Co.,Ltd.

Organized by **dotproperty**

**DOT PROPERTY THAILAND AWARDS 2023**

**WINNER**

BEST POOL VILLA BOUTIQUE DESIGN PHUKET

Maison Sky Villas by Maison Property/Phuket Co.,Ltd.

Organized by **dotproperty**

**DOT PROPERTY THAILAND AWARDS 2024**

**WINNER**

BEST LUXURY VILLA BOUTIQUE DESIGN PHUKET

Phuvista Villas Naithon by Merit Phuket Co.,Ltd.

Organized by **dotproperty**

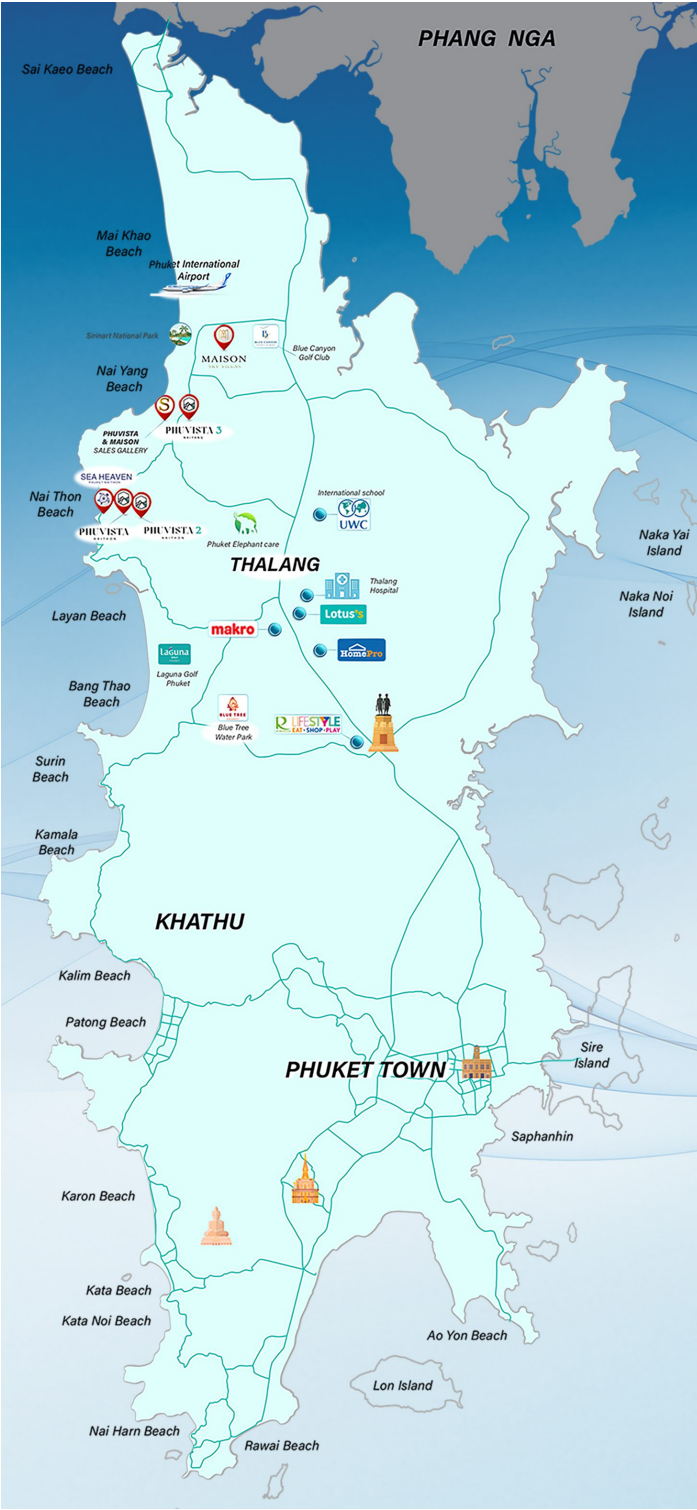
**DOT PROPERTY THAILAND AWARDS 2024**

**WINNER**

BEST MID-RANGE POOL VILLA PHUKET

Phuvista 3 Naiyang by Airport Pool Villa Co.,Ltd.

Organized by **dotproperty**



**PHUVISTA NAITHON**

**START AT 30 MB**

**START AT 26 MB**

**PHUVISTA 2 NAITHON**

**START AT 16 MB**

**PHUVISTA 3 NAIYANG**

**MAISON SKY VILLAS**

**START AT 21 MB**

**START AT 4.9 MB**

**SEA HEAVEN PHUKET NAITHON**

**OUR PROJECTS**



# PHUVISTA 3

NAIYANG



99/9 Moo.3 ,Sakoo Sub-district,  
Thalang district, Phuket Province, Thailand

---

[info@phuvistaphuket.com](mailto:info@phuvistaphuket.com) / [www.phuvistaphuket.com](http://www.phuvistaphuket.com)

Call : +669 8882 1164